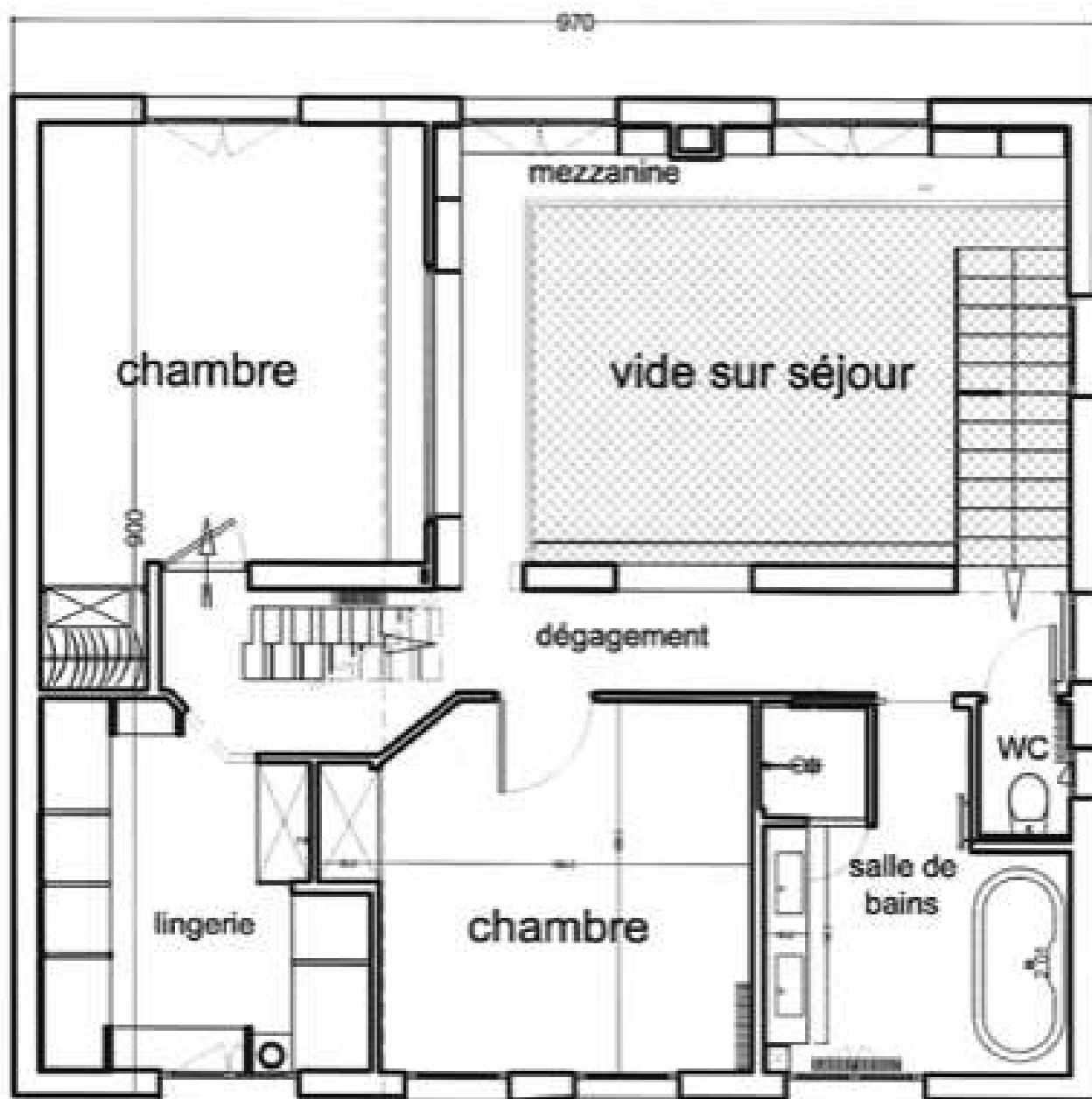
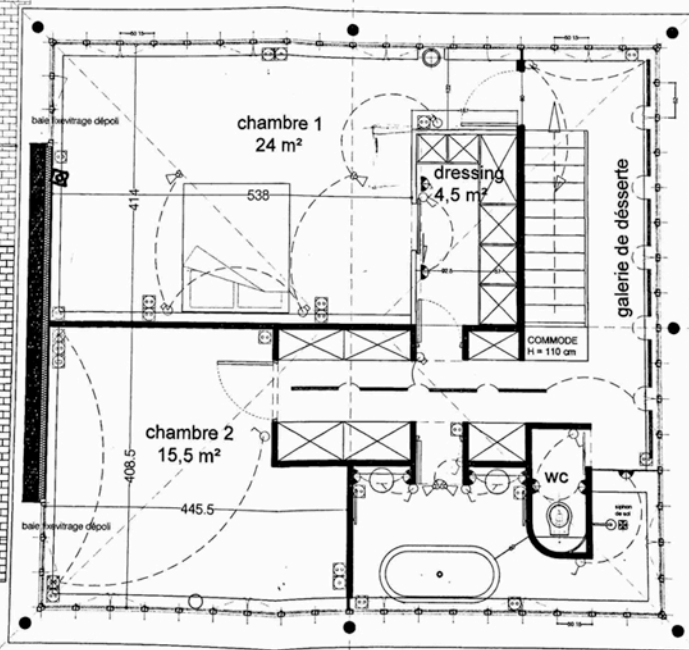


# PREMIER ETAGE








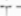





# GARCHES - PLAN DU DEUXIEME ETAGE

échelle 1/20° date : le 18 juin 2012



## ELECTRICITE

-  applique
-  sortie de fil
-  project led orientable
-  interrupteur
-  va et vient
-  télérupteur
-  PC 10A +T
-  PCC 10A +T
-  prise TV
-  prise RJ 45
-  fluo à ballast électronique